

## Anti-P114-RHO-GEF/ARHGEF18 antibody (C-Term) (STJ70465)

### GENERAL INFORMATION

Product Type	Primary antibodies
Applications	Pep-ELISA/WB/IF
Host / Source	Goat
Reactivity	Human

### PRODUCT PROPERTIES

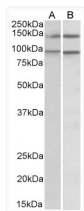
Clonality	Polyclonal
Concentration	0.5 mg/mL
Conjugation	Unconjugated
Purification	Purified from goat serum by ammonium sulphate precipitation followed by antigen affinity chromatography using the immunizing peptide.
Dilution Range	Peptide ELISA: antibody detection limit dilution 1:128000. WB: Approx 140+90kDa band observed in lysates of cell line Daudi and Caco-2 (calculated MW of 114kDa according to NP_056133.2 and 131kDa according to NP_001124427.1). Recommended concentr
Formulation	0.5 mg/ml in Tris saline, 0.02% sodium azide, pH7.3 with 0.5% bovine serum albumin. NA
Isotype	IgG
Storage Instruction	Store at -20°C on receipt and minimise freeze-thaw cycles.

### TARGET INFORMATION

Gene ID	<a href="#">23370</a>
Gene Symbol	<a href="#">ARHGEF18</a>
UniProt ID	<a href="#">ARHGI_HUMAN</a>
Immunogen Region	C-Term
Immunogen Sequence	SAKEDASKEDVIFF
Specificity	This antibody is expected to recognize both reported isoforms (NP_056133.2; NP_001124427.1).

### ADDITIONAL INFORMATION

Note STRICTLY FOR FURTHER SCIENTIFIC RESEARCH USE ONLY (RUO). MUST NOT TO BE USED IN DIAGNOSTIC OR THERAPEUTIC APPLICATIONS.



STJ70465 (0.5 µg/ml) staining of lysates of cell lines Daudi (A) and Caco-2 (B) (35 µg protein in RIPA buffer). Primary incubation was 1 hour. Detected by chemiluminescence.