

Anti-ORP2 antibody (C-Term) (STJ70457)

GENERAL INFORMATION

Product Type	Primary antibodies
Applications	Pep-ELISA/WB
Host / Source	Goat
Reactivity	Human/Mouse/Rat

PRODUCT PROPERTIES

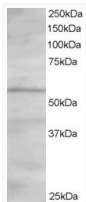
Clonality	Polyclonal
Concentration	0.5 mg/mL
Conjugation	Unconjugated
Purification	Purified from goat serum by ammonium sulphate precipitation followed by antigen affinity chromatography using the immunizing peptide.
Dilution Range	Peptide ELISA: antibody detection limit dilution 1:8000. WB: Approx 55-60kDa band observed in Human Heart lysates (predicted MWs of 54 and 55kDa according to NP_055650.1 and NP_653081.1). Recommended for use at 1-2µg/ml.
Formulation	0.5 mg/ml in Tris saline, 0.02% sodium azide, pH7.3 with 0.5% bovine serum albumin. NA
Isotype	IgG
Storage Instruction	Store at -20°C on receipt and minimise freeze-thaw cycles.

TARGET INFORMATION

Gene ID	9885
Gene Symbol	OSBPL2
UniProt ID	OSBL2_HUMAN
Immunogen Region	C-Term
Immunogen Sequence	YFERNFSDCPDYI
Specificity	This antibody is expected to recognise both reported isoforms (represented by NP_055650.1 and NP_653081.1)

ADDITIONAL INFORMATION

Note STRICTLY FOR FURTHER SCIENTIFIC RESEARCH USE ONLY (RUO). MUST NOT TO BE USED IN DIAGNOSTIC OR THERAPEUTIC APPLICATIONS.



STJ70457 staining (1. 5µg/ml) of Human Heart lysate (RIPA buffer, 30µg total protein per lane). Primary incubated for 1 hour. Detected by western blot using chemiluminescence.