

Anti-Neurobeachin antibody (C-Term) (STJ70452)

GENERAL INFORMATION

| | |
|---------------|---------------------|
| Product Type | Primary antibodies |
| Applications | Pep-ELISA/IHC |
| Host / Source | Goat |
| Reactivity | Human/Mouse/Dog/Cow |

PRODUCT PROPERTIES

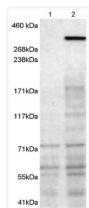
| | |
|---------------------|--|
| Clonality | Polyclonal |
| Concentration | 0.5 mg/mL |
| Conjugation | Unconjugated |
| Purification | Purified from goat serum by ammonium sulphate precipitation followed by antigen affinity chromatography using the immunizing peptide. |
| Dilution Range | Peptide ELISA: antibody detection limit dilution 1:4000. IHC: In paraffin embedded Human Cerebral Cortex shows textured cytoplasm staining in the neuronal cell bodies. Recommended concentration: 5-10µg/ml. |
| Formulation | 0.5 mg/ml in Tris saline, 0.02% sodium azide, pH7.3 with 0.5% bovine serum albumin. NA |
| Isotype | IgG |
| Storage Instruction | Store at -20°C on receipt and minimise freeze-thaw cycles. |

TARGET INFORMATION

| | |
|--------------------|--|
| Gene ID | 26960 |
| Gene Symbol | NBEA |
| UniProt ID | NBEA_HUMAN |
| Immunogen Region | C-Term |
| Immunogen Sequence | DFNRWHYEHQNRV |
| Specificity | This antibody is expected to recognise isoform 1 (NP_056493.3) and isoform 2 (NP_001191126.1). |

ADDITIONAL INFORMATION

Note STRICTLY FOR FURTHER SCIENTIFIC RESEARCH USE ONLY (RUO). MUST NOT TO BE USED IN DIAGNOSTIC OR THERAPEUTIC APPLICATIONS.



STJ70452 (1µg/ml) staining of 1) untransfected HEK293T cells 2) HEK293T cells transfected with mouse NBEA. Detected by chemiluminescence. Data kindly provided by Professor John Creemers, K. U. Leuven, Belgium. This data is from a previous batch, not on sale.