

## Anti-ARHGEF4 antibody (N-Term) (STJ70430)

### GENERAL INFORMATION

Product Type	Primary antibodies
Applications	Pep-ELISA/WB
Host / Source	Goat
Reactivity	Human

### PRODUCT PROPERTIES

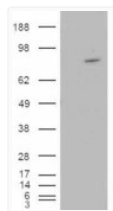
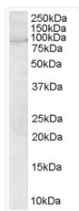
Clonality	Polyclonal
Concentration	0.5 mg/mL
Conjugation	Unconjugated
Purification	Purified from goat serum by ammonium sulphate precipitation followed by antigen affinity chromatography using the immunizing peptide.
Dilution Range	Peptide ELISA: antibody detection limit dilution 1:32000. WB: Approx 80kDa band observed in Human Brain lysates and in transfected HEK293 transiently expressing ARHGEF4 (calculated MW of 79.1kDa according to NP_056135.2 and 76.4kDa according to 1
Formulation	0.5 mg/ml in Tris saline, 0.02% sodium azide, pH7.3 with 0.5% bovine serum albumin. NA
Isotype	IgG
Storage Instruction	Store at -20°C on receipt and minimise freeze-thaw cycles.

### TARGET INFORMATION

Gene ID	<a href="#">50649</a>
Gene Symbol	<a href="#">ARHGEF4</a>
UniProt ID	<a href="#">ARHG4_HUMAN</a>
Immunogen Region	N-Term
Immunogen Sequence	PWEEPAGEKPCS
Specificity	This antibody is expected to recognise both reported isoforms (NP_056135.2; NP_127462.1).

### ADDITIONAL INFORMATION

Note STRICTLY FOR FURTHER SCIENTIFIC RESEARCH USE ONLY (RUO). MUST NOT TO BE USED IN DIAGNOSTIC OR THERAPEUTIC APPLICATIONS.



STJ70430 (2µg/ml) staining of Human Brain lysate (35µg protein in RIPA buffer). Primary incubation was 1 hour. Detected by chemiluminescence. HEK293 overexpressing ARHGEF4 (RC215591) and probed with STJ70430 (mock transfection in first lane), tested by Origene.