

## Anti-MRG15/MORF4L1 antibody (N-Term) (STJ70420)

### GENERAL INFORMATION

Product Type	Primary antibodies
Applications	Pep-ELISA/WB/IHC
Host / Source	Goat
Reactivity	Human/Mouse/Rat/Pig/Cow

### PRODUCT PROPERTIES

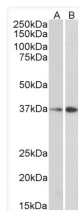
Clonality	Polyclonal
Concentration	0.5 mg/mL
Conjugation	Unconjugated
Purification	Purified from goat serum by ammonium sulphate precipitation followed by antigen affinity chromatography using the immunizing peptide.
Dilution Range	Peptide ELISA: antibody detection limit dilution 1:128000. WB: Approx 37kDa band observed in nuclear lysates of cell lines HepG2 and NIH3T3 and approx 40kDa band observed in Mouse, Rat and Pig Liver lysates (calculated MW of 37.2kDa according to
Formulation	0.5 mg/ml in Tris saline, 0.02% sodium azide, pH7.3 with 0.5% bovine serum albumin. NA
Isotype	IgG
Storage Instruction	Store at -20°C on receipt and minimise freeze-thaw cycles.

### TARGET INFORMATION

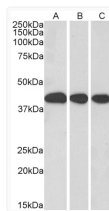
Gene ID	<a href="#">10933</a>
Gene Symbol	<a href="#">MORF4L1</a>
UniProt ID	<a href="#">MO4L1_HUMAN</a>
Immunogen Region	N-Term
Immunogen Sequence	APKQDPKPKFQEG
Specificity	This antibody is expected to recognise isoform 1 (NP_006782.1) and isoform 2 (NP_996670.1).

### ADDITIONAL INFORMATION

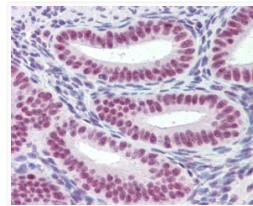
Note **STRICTLY FOR FURTHER SCIENTIFIC RESEARCH USE ONLY (RUO). MUST NOT TO BE USED IN DIAGNOSTIC OR THERAPEUTIC APPLICATIONS.**



STJ70420 (0.3 µg/ml) staining of NIH3T3 (A) and HepG2 (B) lysate (35 µg protein in RIPA buffer). Primary incubation was 1 hour. Detected by chemiluminescence



STJ70420 (0.3 µg/ml) staining of Mouse Liver (A), Rat Liver (B) and Pig Liver (C) lysate (35 µg protein in RIPA buffer). Primary incubation was 1 hour. Detected by chemiluminescence



STJ70420 (2.5 µg/ml) staining of paraffin embedded Human Uterus. Steamed antigen retrieval with citrate buffer pH 6, AP-staining. This data is from a previous batch, not on sale.