

Anti-BAP/SIL1 antibody (C-Term) (STJ70416)

GENERAL INFORMATION

Product Type	Primary antibodies
Applications	Pep-ELISA/WB/IHC
Host / Source	Goat
Reactivity	Human

PRODUCT PROPERTIES

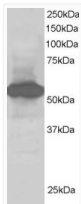
Clonality	Polyclonal
Concentration	0.5 mg/mL
Conjugation	Unconjugated
Purification	Purified from goat serum by ammonium sulphate precipitation followed by antigen affinity chromatography using the immunizing peptide.
Dilution Range	Peptide ELISA: antibody detection limit dilution 1:8000. WB: Approx 55-60 kDa band observed in Human Liver and Kidney extracts (predicted MW of 53kDa according to NP_071909.1). Recommended concentration: 1-2µg/ml. IHC: Paraffin embedded Human
Formulation	0.5 mg/ml in Tris saline, 0.02% sodium azide, pH7.3 with 0.5% bovine serum albumin. NA
Isotype	IgG
Storage Instruction	Store at -20°C on receipt and minimise freeze-thaw cycles.

TARGET INFORMATION

Gene ID	64374
Gene Symbol	SIL1
UniProt ID	SIL1_HUMAN
Immunogen Region	C-Term
Immunogen Sequence	ELLGSVNSLLKELR
Specificity	Variants (NP_071909.1; NP_001032722.1) encode the same isoform.

ADDITIONAL INFORMATION

Note STRICTLY FOR FURTHER SCIENTIFIC RESEARCH USE ONLY (RUO). MUST NOT TO BE USED IN DIAGNOSTIC OR THERAPEUTIC APPLICATIONS.



STJ70416 staining (1µg/ml) of Human Kidney lysate (RIPA buffer, 30µg total protein per lane). Primary incubated for 1 hour. Detected by chemiluminescence.