

## Anti-TCF19/SC1 antibody (C-Term) (STJ70413)

### GENERAL INFORMATION

Product Type	Primary antibodies
Applications	Pep-ELISA/WB
Host / Source	Goat
Reactivity	Human

### PRODUCT PROPERTIES

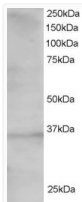
Clonality	Polyclonal
Concentration	0.5 mg/mL
Conjugation	Unconjugated
Purification	Purified from goat serum by ammonium sulphate precipitation followed by antigen affinity chromatography using the immunizing peptide.
Dilution Range	Peptide ELISA: antibody detection limit dilution 1:32000. WB: Approx 35 kDa band observed in 293 lysate (predicted MW of 41kDa according to NP_009040). Recommended for use at 1-2µg/ml.
Formulation	0.5 mg/ml in Tris saline, 0.02% sodium azide, pH7.3 with 0.5% bovine serum albumin. NA
Isotype	IgG
Storage Instruction	Store at -20°C on receipt and minimise freeze-thaw cycles.

### TARGET INFORMATION

Gene ID	<a href="#">6941</a>
Gene Symbol	<a href="#">TCF19</a>
UniProt ID	<a href="#">TCF19_HUMAN</a>
Immunogen Region	C-Term
Immunogen Sequence	RSTAKAPSDTPAHE
Specificity	Immunizing peptide was designed based on NP_009040.1, but this version has become NP_009040.2 and shorter, thus no longer matching with the peptide.

### ADDITIONAL INFORMATION

Note STRICTLY FOR FURTHER SCIENTIFIC RESEARCH USE ONLY (RUO). MUST NOT TO BE USED IN DIAGNOSTIC OR THERAPEUTIC APPLICATIONS.



STJ70413 staining (1.5µg/ml) of 293 lysate (RIPA buffer, 30µg total protein per lane). Primary incubated for 1 hour. Detected by western blot using chemiluminescence.