

Anti-FOXE1/TTF2 antibody (C-Term) (STJ70388)

GENERAL INFORMATION

Product Type	Primary antibodies
Applications	Pep-ELISA/IHC
Host / Source	Goat
Reactivity	Human

PRODUCT PROPERTIES

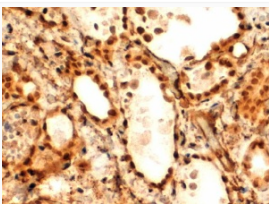
Clonality	Polyclonal
Concentration	0.5 mg/mL
Conjugation	Unconjugated
Purification	Purified from goat serum by ammonium sulphate precipitation followed by antigen affinity chromatography using the immunizing peptide.
Dilution Range	Peptide ELISA: antibody detection limit dilution 1:8000. WB: Preliminary experiments gave an approx 70kDa band in Human Thymus and Thyroid Gland lysates after 0.3µg/ml antibody staining. Please note that currently we cannot find an explanation in
Formulation	0.5 mg/ml in Tris saline, 0.02% sodium azide, pH7.3 with 0.5% bovine serum albumin. NA
Isotype	IgG
Storage Instruction	Store at -20°C on receipt and minimise freeze-thaw cycles.

TARGET INFORMATION

Gene ID	2304
Gene Symbol	FOXE1
UniProt ID	FOXE1_HUMAN
Immunogen Region	C-Term
Immunogen Sequence	AYPGGIDRFVSAM

ADDITIONAL INFORMATION

Note STRICTLY FOR FURTHER SCIENTIFIC RESEARCH USE ONLY (RUO). MUST NOT TO BE USED IN DIAGNOSTIC OR THERAPEUTIC APPLICATIONS.



STJ70388 (2µg/ml) staining of paraffin embedded Human Thyroid Gland. Steamed antigen retrieval with Tris/EDTA buffer pH 9, HRP-staining.