

Anti-FOXC2 antibody (C-Term) (STJ70385)

GENERAL INFORMATION

Product Type	Primary antibodies
Applications	Pep-ELISA/WB/FC
Host / Source	Goat
Reactivity	Human/Rat/Dog/Cow

PRODUCT PROPERTIES

Clonality	Polyclonal
Concentration	0.5 mg/mL
Conjugation	Unconjugated
Purification	Purified from goat serum by ammonium sulphate precipitation followed by antigen affinity chromatography using the immunizing peptide.
Dilution Range	Peptide ELISA: antibody detection limit dilution 1:4000. WB: Approx 60-70kDa band observed in nuclear lysates of cell lines HEK293 (calculated MW of 53.7kDa according to NP_005242.1). This molecular weight is routinely observed by other sources e
Formulation	0.5 mg/ml in Tris saline, 0.02% sodium azide, pH7.3 with 0.5% bovine serum albumin. NA
Isotype	IgG
Storage Instruction	Store at -20°C on receipt and minimise freeze-thaw cycles.

TARGET INFORMATION

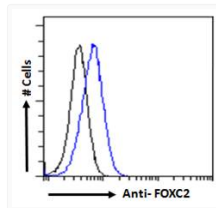
Gene ID	2303
Gene Symbol	FOXC2
UniProt ID	FOXC2_HUMAN
Immunogen Region	C-Term
Immunogen Sequence	RHAAPYSYDCTKY

ADDITIONAL INFORMATION

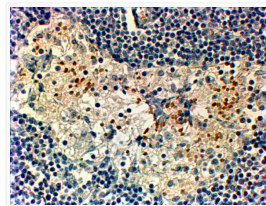
Note **STRICTLY FOR FURTHER SCIENTIFIC RESEARCH USE ONLY (RUO). MUST NOT TO BE USED IN DIAGNOSTIC OR THERAPEUTIC APPLICATIONS.**



STJ70385 staining (2µg/ml) of nuclear HEK293 (A) and (1µg/ml) negative control Human Pancreas (B) lysate [RIPA buffer, 35µg total protein per lane]. Detected by chemiluminescence.



STJ70385 Flow cytometric analysis of paraformaldehyde fixed HEK293 cells (blue line), permeabilized with 0.5% Triton. Primary incubation 1hr (10µg/ml) followed by Alexa Fluor 488 secondary antibody (1µg/ml). IgG control: Unimmunized goat IgG (black line) followed by Alexa Fluor 488 secondary antibody.



STJ70385 (2µg/ml) staining of paraffin embedded Human Breast NA NA NA Cancer. Steamed antigen retrieval with Tris/EDTA buffer Ph 9, HRP-staining. This data is from a previous batch, not on sale.