

## Anti-USP6/TRE2/TRE17 antibody (C-Term) (STJ70373)

### GENERAL INFORMATION

Product Type	Primary antibodies
Applications	Pep-ELISA/WB
Host / Source	Goat
Reactivity	Human

### PRODUCT PROPERTIES

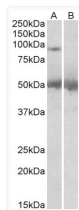
Clonality	Polyclonal
Concentration	0.5 mg/mL
Conjugation	Unconjugated
Purification	Purified from goat serum by ammonium sulphate precipitation followed by antigen affinity chromatography using the immunizing peptide.
Dilution Range	Peptide ELISA: antibody detection limit dilution 1:16000. WB: Approx 90kDa band observed in Human Placenta lysates (calculated MW of 89.5kDa according to NP_004496.1). Recommended concentration: 1-3µg/ml. An additional band of 50kDa was consistent
Formulation	0.5 mg/ml in Tris saline, 0.02% sodium azide, pH7.3 with 0.5% bovine serum albumin. NA
Isotype	IgG
Storage Instruction	Store at -20°C on receipt and minimise freeze-thaw cycles.

### TARGET INFORMATION

Gene ID	<a href="#">9098</a>
Gene Symbol	<a href="#">USP6</a>
UniProt ID	<a href="#">UBP6_HUMAN</a>
Immunogen Region	C-Term
Immunogen Sequence	KISPLHHLQMECS

### ADDITIONAL INFORMATION

Note STRICTLY FOR FURTHER SCIENTIFIC RESEARCH USE ONLY (RUO). MUST NOT TO BE USED IN DIAGNOSTIC OR THERAPEUTIC APPLICATIONS.



STJ70373 (2µg/ml) staining of Human Placenta lysate (35µg protein in RIPA buffer) with (B) and without (A) blocking with the immunizing peptide. Primary incubation was 1 hour. Detected by chemiluminescence.