

Anti-JIP3/Syd2/JSAP1 antibody (N-Term) (STJ70371)

GENERAL INFORMATION

Product Type	Primary antibodies
Applications	Pep-ELISA/IHC
Host / Source	Goat
Reactivity	Human/Mouse/Rat/Cow

PRODUCT PROPERTIES

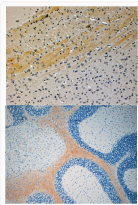
Clonality	Polyclonal
Concentration	0.5 mg/mL
Conjugation	Unconjugated
Purification	Purified from goat serum by ammonium sulphate precipitation followed by antigen affinity chromatography using the immunizing peptide.
Dilution Range	Peptide ELISA: antibody detection limit dilution 1:4000. IHC: In paraffin embedded Mouse Brain shows axonal staining in various regions. Recommended concentration, 4-6µg/ml.
Formulation	0.5 mg/ml in Tris saline, 0.02% sodium azide, pH7.3 with 0.5% bovine serum albumin. NA
Isotype	IgG
Storage Instruction	Store at -20°C on receipt and minimise freeze-thaw cycles.

TARGET INFORMATION

Gene ID	23162
Gene Symbol	MAPK8IP3
UniProt ID	JIP3_HUMAN
Immunogen Region	N-Term
Immunogen Sequence	MEIQMDEGGGVV
Specificity	This antibody is expected to recognise both reported Human isoforms of this protein (as represented by NP_055948.2 and NP_001035529.1).

ADDITIONAL INFORMATION

Note STRICTLY FOR FURTHER SCIENTIFIC RESEARCH USE ONLY (RUO). MUST NOT TO BE USED IN DIAGNOSTIC OR THERAPEUTIC APPLICATIONS.



STJ70371 (4µg/ml) staining of paraffin embedded Mouse Brain. Steamed antigen retrieval with citrate buffer pH 6, HRP-staining.