

Anti-PI31/PSMF1-Isoform 1 antibody (C-Term) (STJ70320)

GENERAL INFORMATION

Product Type	Primary antibodies
Applications	Pep-ELISA/WB/IF
Host / Source	Goat
Reactivity	Human/Mouse/Rat/Dog/Cow

PRODUCT PROPERTIES

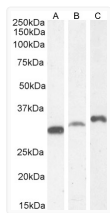
Clonality	Polyclonal
Concentration	0.5 mg/mL
Conjugation	Unconjugated
Purification	Purified from goat serum by ammonium sulphate precipitation followed by antigen affinity chromatography using the immunizing peptide.
Dilution Range	Peptide ELISA: antibody detection limit dilution 1:32000. WB: Approx 30kDa band observed in lysates of cell line HEK293, approx 30-32kDa in lysates of cell lines K562, NIH3T3, Neuro2a and KNRK, and approx. 35kDa in lysates of cell line LNCaP (cal)
Formulation	0.5 mg/ml in Tris saline, 0.02% sodium azide, pH7.3 with 0.5% bovine serum albumin. NA
Isotype	IgG
Storage Instruction	Store at -20°C on receipt and minimise freeze-thaw cycles.

TARGET INFORMATION

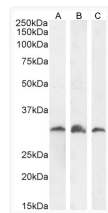
Gene ID	9491
Gene Symbol	PSMF1
UniProt ID	PSMF1_HUMAN
Immunogen Region	C-Term
Immunogen Sequence	DHLPPPGYDDMYL
Specificity	This antibody is expected to recognize isoform 1 (NP_006805.2 and NP_848693.2).

ADDITIONAL INFORMATION

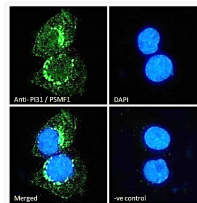
Note **STRICTLY FOR FURTHER SCIENTIFIC RESEARCH USE ONLY (RUO). MUST NOT TO BE USED IN DIAGNOSTIC OR THERAPEUTIC APPLICATIONS.**



STJ70320 (0.3 µg/ml) staining of HEK293 (A), K562 (B) and (1 µg/ml) LNCaP (C) cell lysate (35 µg protein in RIPA buffer). Detected by chemiluminescence.



STJ70320 (1 µg/ml) staining of KNRK (A), NIH3T3 (B) and (0.3 µg/ml) Neuro2a (C) cell lysate (35 µg protein in RIPA buffer). Detected by chemiluminescence.



STJ70320 Immunofluorescence analysis of paraformaldehyde fixed A431 cells, permeabilized with 0.15% Triton. Primary incubation 1hr (10 µg/ml) followed by Alexa Fluor 488 secondary antibody (2 µg/ml), showing endoplasmic reticulum and cytoplasmic staining. The nuclear stain is DAPI (blue). Negative control: Unimmunized goat IgG (10 µg/ml) followed by Alexa Fluor 488 secondary antibody (2 µg/ml).