

Anti-CLLD8/SETDB2 antibody (N-Term) (STJ70279)

GENERAL INFORMATION

Product Type	Primary antibodies
Applications	Pep-ELISA/WB
Host / Source	Goat
Reactivity	Human/Mouse/Rat/Dog/Pig/Cow

PRODUCT PROPERTIES

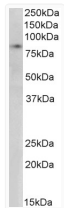
Clonality	Polyclonal
Concentration	0.5 mg/mL
Conjugation	Unconjugated
Purification	Purified from goat serum by ammonium sulphate precipitation followed by antigen affinity chromatography using the immunizing peptide.
Dilution Range	Peptide ELISA: antibody detection limit dilution 1:1000. WB: Approx 85kDa band observed in nuclear lysates of cell line HeLa (calculated MW of 81.9kDa according to NP_114121.2). Recommended concentration: 1-3µg/ml. Primary incubation was 1 hour.
Formulation	0.5 mg/ml in Tris saline, 0.02% sodium azide, pH7.3 with 0.5% bovine serum albumin. NA
Isotype	IgG
Storage Instruction	Store at -20°C on receipt and minimise freeze-thaw cycles.

TARGET INFORMATION

Gene ID	83852
Gene Symbol	SETDB2
UniProt ID	SETB2_HUMAN
Immunogen Region	N-Term
Immunogen Sequence	GEKNGDAKTFWME
Specificity	This antibody is expected to recognize both reported isoforms (NP_114121.2; NP_001153780.1).

ADDITIONAL INFORMATION

Note STRICTLY FOR FURTHER SCIENTIFIC RESEARCH USE ONLY (RUO). MUST NOT TO BE USED IN DIAGNOSTIC OR THERAPEUTIC APPLICATIONS.



STJ70279 (0.3µg/ml) staining of Nuclear HeLa lysate (35µg protein in RIPA buffer). Detected by chemiluminescence.