

## Anti-PRDM11 antibody (C-Term) (STJ70278)

### GENERAL INFORMATION

Product Type	Primary antibodies
Applications	Pep-ELISA/WB/IHC
Host / Source	Goat
Reactivity	Human

### PRODUCT PROPERTIES

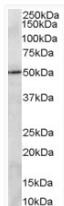
Clonality	Polyclonal
Concentration	0.5 mg/mL
Conjugation	Unconjugated
Purification	Purified from goat serum by ammonium sulphate precipitation followed by antigen affinity chromatography using the immunizing peptide.
Dilution Range	Peptide ELISA: antibody detection limit dilution 1:32000. WB: Approx 50kDa band observed in Human Lung Carcinoma A549 cell line lysates (calculated MW of 58kDa according to NP_064614.2). Recommended concentration: 2-3µg/ml. IHC: Paraffin embe
Formulation	0.5 mg/ml in Tris saline, 0.02% sodium azide, pH7.3 with 0.5% bovine serum albumin. NA
Isotype	IgG
Storage Instruction	Store at -20°C on receipt and minimise freeze-thaw cycles.

### TARGET INFORMATION

Gene ID	<a href="#">56981</a>
Gene Symbol	<a href="#">PRDM11</a>
UniProt ID	<a href="#">PRD11_HUMAN</a>
Immunogen Region	C-Term
Immunogen Sequence	LSEGRVRSGLCGG

### ADDITIONAL INFORMATION

Note STRICTLY FOR FURTHER SCIENTIFIC RESEARCH USE ONLY (RUO). MUST NOT TO BE USED IN DIAGNOSTIC OR THERAPEUTIC APPLICATIONS.



STJ70278 (2µg/ml) staining of A549 lysate (35µg protein in RIPA buffer). Primary incubation was 1 hour. Detected by chemiluminescence.