

Anti-NDRG1 antibody (C-Term) (STJ70275)

GENERAL INFORMATION

Product Type	Primary antibodies
Applications	Pep-ELISA/WB/IHC
Host / Source	Goat
Reactivity	Human

PRODUCT PROPERTIES

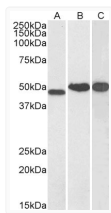
Clonality	Polyclonal
Concentration	0.5 mg/mL
Conjugation	Unconjugated
Purification	Purified from goat serum by ammonium sulphate precipitation followed by antigen affinity chromatography using the immunizing peptide.
Dilution Range	Peptide ELISA: antibody detection limit dilution 1:32000. WB: Approx 48kDa band observed in Human Kidney, and approx 50kDa band observed in Human Brain (Cerebellum) and Testis lysates (calculated MW of 42.8kDa according to NP_006087.2). This mole
Formulation	0.5 mg/ml in Tris saline, 0.02% sodium azide, pH7.3 with 0.5% bovine serum albumin. NA
Isotype	IgG
Storage Instruction	Store at -20°C on receipt and minimise freeze-thaw cycles.

TARGET INFORMATION

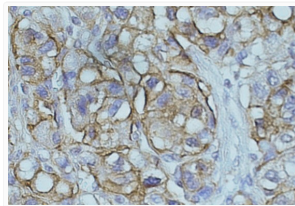
Gene ID	10397
Gene Symbol	NDRG1
UniProt ID	NDRG1_HUMAN
Immunogen Region	C-Term
Immunogen Sequence	GNSAGPKSMEVSC
Specificity	The variants (NP_006087.2; NP_001128714.1) encode the same protein

ADDITIONAL INFORMATION

Note **STRICTLY FOR FURTHER SCIENTIFIC RESEARCH USE ONLY (RUO). MUST NOT TO BE USED IN DIAGNOSTIC OR THERAPEUTIC APPLICATIONS.**



STJ70275 (0.1 µg/ml) staining of Human Kidney (A), Cerebellum (B) and Testis (C) lysate (35 µg protein in RIPA buffer). Detected by chemiluminescence.



STJ70275 (0.5 µg/ml) staining of paraffin embedded Human hepatocellular carcinoma. Data obtained from C. Furer, Visceral Surgery, University of Bern, Switzerland.