

Anti-KLF8/BKLF3 antibody (N-Term) (STJ70190)

GENERAL INFORMATION

Product Type	Primary antibodies
Applications	Pep-ELISA/IF/FC
Host / Source	Goat
Reactivity	Human

PRODUCT PROPERTIES

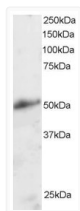
Clonality	Polyclonal
Concentration	0.5 mg/mL
Conjugation	Unconjugated
Purification	Purified from goat serum by ammonium sulphate precipitation followed by antigen affinity chromatography using the immunizing peptide.
Dilution Range	Peptide ELISA: antibody detection limit dilution 1:32000. WB: Preliminary testing showed bands at approx. 27+45kDa in HeLa nuclear cell lysate at a concentration of 1ug/ml (calculated Mwt. of 39.3kDa according to NP_009181.2 and 27.2kDa according
Formulation	0.5 mg/ml in Tris saline, 0.02% sodium azide, pH7.3 with 0.5% bovine serum albumin. NA
Isotype	IgG
Storage Instruction	Store at -20°C on receipt and minimise freeze-thaw cycles.

TARGET INFORMATION

Gene ID	11279
Gene Symbol	KLF8
UniProt ID	KLF8_HUMAN
Immunogen Region	N-Term
Immunogen Sequence	VDMDKLINNLEVQ
Specificity	This antibody is expected to recognise isoform 1 (NP_009181.2) and isoform 2 (NP_001152768.1).

ADDITIONAL INFORMATION

Note STRICTLY FOR FURTHER SCIENTIFIC RESEARCH USE ONLY (RUO). MUST NOT TO BE USED IN DIAGNOSTIC OR THERAPEUTIC APPLICATIONS.



STJ70190 staining (2µg/ml) of Human Kidney lysate (RIPA buffer, 30µg total protein per lane). Primary incubated for 1 hour. Detected by chemiluminescence.