

Anti-KLF15 antibody (N-Term) (STJ70188)

GENERAL INFORMATION

Product Type	Primary antibodies
Applications	Pep-ELISA/WB/FC
Host / Source	Goat
Reactivity	Human/Mouse/Rat/Pig

PRODUCT PROPERTIES

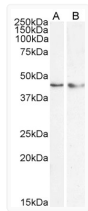
Clonality	Polyclonal
Concentration	0.5 mg/mL
Conjugation	Unconjugated
Purification	Purified from goat serum by ammonium sulphate precipitation followed by antigen affinity chromatography using the immunizing peptide.
Dilution Range	Peptide ELISA: antibody detection limit dilution 1:64000. WB: Approx 45kDa band observed in HeLa and in nuclear cell lysates of HepG2 (calculated MW of 44kDa according to NP_054798.1). Recommended concentration: 0.3-1µg/ml. Primary incubation 1 h
Formulation	0.5 mg/ml in Tris saline, 0.02% sodium azide, pH7.3 with 0.5% bovine serum albumin. NA
Isotype	IgG
Storage Instruction	Store at -20°C on receipt and minimise freeze-thaw cycles.

TARGET INFORMATION

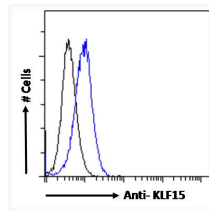
Gene ID	28999
Gene Symbol	KLF15
UniProt ID	KLF15_HUMAN
Immunogen Region	N-Term
Immunogen Sequence	VDHLLPVDEFSS

ADDITIONAL INFORMATION

Note STRICTLY FOR FURTHER SCIENTIFIC RESEARCH USE ONLY (RUO). MUST NOT TO BE USED IN DIAGNOSTIC OR THERAPEUTIC APPLICATIONS.



STJ70188 (1µg/ml) staining of nuclear HepG2 (A) and (0.5µg/ml) HeLa (B) cell lysate (35µg protein in RIPA buffer). Detected by chemiluminescence.



STJ70188 Flow cytometric analysis of paraformaldehyde fixed HepG2 cells (blue line), permeabilized with 0.5% Triton. Primary incubation 1hr (10µg/ml) followed by Alexa Fluor 488 secondary antibody (1µg/ml). IgG control: Unimmunized goat IgG (black line) followed by Alexa Fluor 488 secondary antibody.