

Anti-Flotillin 1 antibody (C-Term) (STJ70184)

GENERAL INFORMATION

Product Type	Primary antibodies
Applications	Pep-ELISA/WB/IHC
Host / Source	Goat
Reactivity	Human/Dog/Pig/Cow

PRODUCT PROPERTIES

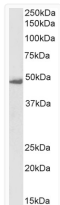
Clonality	Polyclonal
Concentration	0.5 mg/mL
Conjugation	Unconjugated
Purification	Purified from goat serum by ammonium sulphate precipitation followed by antigen affinity chromatography using the immunizing peptide.
Dilution Range	Peptide ELISA: antibody detection limit dilution 1:32000. WB: Approx 48kDa band observed in lysates of cell line K562 and in preliminary testing of cell lysate MCF7 (calculated MW of 47.4kDa according to NP_005794.1). Recommended concentration: 0
Formulation	0.5 mg/ml in Tris saline, 0.02% sodium azide, pH7.3 with 0.5% bovine serum albumin. NA
Isotype	IgG
Storage Instruction	Store at -20°C on receipt and minimise freeze-thaw cycles.

TARGET INFORMATION

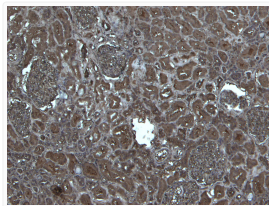
Gene ID	10211
Gene Symbol	FLOT1
UniProt ID	FLOT1_HUMAN
Immunogen Region	C-Term
Immunogen Sequence	SISQVNHKPLRTA
Specificity	This antibody is expected to recognize both reported isoforms (NP_005794.1; NP_001305804.1).

ADDITIONAL INFORMATION

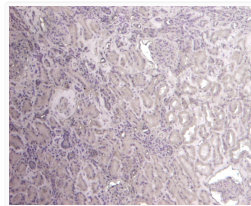
Note STRICTLY FOR FURTHER SCIENTIFIC RESEARCH USE ONLY (RUO). MUST NOT TO BE USED IN DIAGNOSTIC OR THERAPEUTIC APPLICATIONS.



STJ70184 (0.1 µg/ml) staining of K562 lysate (35 µg protein in RIPA buffer). Detected by chemiluminescence.



STJ70184 (5 µg/ml) staining of paraffin embedded Human Kidney. Heat induced antigen retrieval with citrate buffer pH 6, HRP-staining.



STJ70184 Negative Control showing staining of paraffin embedded Human Kidney, with no primary antibody.