

Anti-RGS1/1R20 antibody (C-Term) (STJ70167)

GENERAL INFORMATION

Product Type	Primary antibodies
Applications	Pep-ELISA/WB/IHC
Host / Source	Goat
Reactivity	Human/Mouse/Rat/Dog/Cow

PRODUCT PROPERTIES

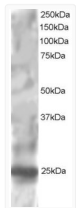
Clonality	Polyclonal
Concentration	0.5 mg/mL
Conjugation	Unconjugated
Purification	Purified from goat serum by ammonium sulphate precipitation followed by antigen affinity chromatography using the immunizing peptide.
Dilution Range	Peptide ELISA: antibody detection limit dilution 1:32000. WB: Approx 25kDa band seen in HepG2 lysate. Recommended for use at 0.5-2µg/ml. IHC: Paraffin embedded Human Thymus and Small Intestine. Recommended concentration: 2.5µg/ml.
Formulation	0.5 mg/ml in Tris saline, 0.02% sodium azide, pH7.3 with 0.5% bovine serum albumin. NA
Isotype	IgG
Storage Instruction	Store at -20°C on receipt and minimise freeze-thaw cycles.

TARGET INFORMATION

Gene ID	5996
Gene Symbol	RGS1
UniProt ID	RGS1_HUMAN
Immunogen Region	C-Term
Immunogen Sequence	NLLNDLQANSLK

ADDITIONAL INFORMATION

Note STRICTLY FOR FURTHER SCIENTIFIC RESEARCH USE ONLY (RUO). MUST NOT TO BE USED IN DIAGNOSTIC OR THERAPEUTIC APPLICATIONS.



STJ70167 staining (1µg/ml) of HepG2 lysate (RIPA buffer, 30µg total protein per lane). Primary incubated for 1 hour. Detected by chemiluminescence.