

Anti-KLF1/EKLF antibody (N-Term) (STJ70157)

GENERAL INFORMATION

Product Type	Primary antibodies
Applications	Pep-ELISA/IHC
Host / Source	Goat
Reactivity	Human/Dog/Pig/Cow

PRODUCT PROPERTIES

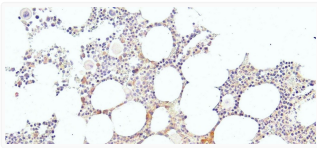
Clonality	Polyclonal
Concentration	0.5 mg/mL
Conjugation	Unconjugated
Purification	Purified from goat serum by ammonium sulphate precipitation followed by antigen affinity chromatography using the immunizing peptide.
Dilution Range	Peptide ELISA: antibody detection limit dilution 1:128000. IHC: Paraffin embedded Human Bone Marrow. Staining in hematopoietic and stroma cells. Recommended concentration: 4-6µg/ml.
Formulation	0.5 mg/ml in Tris saline, 0.02% sodium azide, pH7.3 with 0.5% bovine serum albumin. NA
Isotype	IgG
Storage Instruction	Store at -20°C on receipt and minimise freeze-thaw cycles.

TARGET INFORMATION

Gene ID	10661
Gene Symbol	KLF1
UniProt ID	KLF1_HUMAN
Immunogen Region	N-Term
Immunogen Sequence	ATAETALPSISLT

ADDITIONAL INFORMATION

Note STRICTLY FOR FURTHER SCIENTIFIC RESEARCH USE ONLY (RUO). MUST NOT TO BE USED IN DIAGNOSTIC OR THERAPEUTIC APPLICATIONS.



STJ70157 (4µg/ml) staining of paraffin embedded Human Bone Marrow. Heat induced antigen retrieval with citrate buffer Ph 6, HRP-staining.



STJ70157 Negative Control showing staining of paraffin embedded Human Bone Marrow, with no primary antibody.