

## Anti-MS2/ADAM8/CD156 antibody (C-Term) (STJ70155)

### GENERAL INFORMATION

Product Type	Primary antibodies
Applications	Pep-ELISA/WB/IHC/FC
Host / Source	Goat
Reactivity	Human

### PRODUCT PROPERTIES

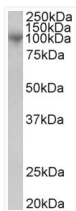
Clonality	Polyclonal
Concentration	0.5 mg/mL
Conjugation	Unconjugated
Purification	Purified from goat serum by ammonium sulphate precipitation followed by antigen affinity chromatography using the immunizing peptide.
Dilution Range	Peptide ELISA: antibody detection limit dilution 1:16000. WB: Approx. 90kDa band observed in lysates of cell line Caco-2, approx. 80kDa in Human Duodenum lysates and approx. 85kDa in preliminary testing of MCF7 cell lysate (calculated MW of 88.8k)
Formulation	0.5 mg/ml in Tris saline, 0.02% sodium azide, pH7.3 with 0.5% bovine serum albumin. NA
Isotype	IgG
Storage Instruction	Store at -20°C on receipt and minimise freeze-thaw cycles.

### TARGET INFORMATION

Gene ID	<a href="#">101</a>
Gene Symbol	<a href="#">ADAM8</a>
UniProt ID	<a href="#">ADAM8_HUMAN</a>
Immunogen Region	C-Term
Immunogen Sequence	QRKQGAGAPTAP
Specificity	This antibody is expected to recognise isoform 1 and 3 (NP_0011100.3; NP_001157962.1).

### ADDITIONAL INFORMATION

Note STRICTLY FOR FURTHER SCIENTIFIC RESEARCH USE ONLY (RUO). MUST NOT TO BE USED IN DIAGNOSTIC OR THERAPEUTIC APPLICATIONS.



STJ70155 (1µg/ml) staining of Human Bone Marrow lysate (35µg protein in RIPA buffer). Primary incubation was 1 hour. Detected by chemiluminescence.