

## Anti-BCAP31/BAP31 antibody (C-Term) (STJ70154)

### GENERAL INFORMATION

Product Type	Primary antibodies
Applications	Pep-ELISA/WB/IHC
Host / Source	Goat
Reactivity	Human/Dog/Pig/Cow

### PRODUCT PROPERTIES

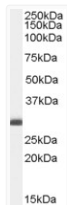
Clonality	Polyclonal
Concentration	0.5 mg/mL
Conjugation	Unconjugated
Purification	Purified from goat serum by ammonium sulphate precipitation followed by antigen affinity chromatography using the immunizing peptide.
Dilution Range	Peptide ELISA: antibody detection limit dilution 1:32000. WB: Approx 30kDa band observed in Human Placenta and Brain lysate (predicted MW of 28kDa according to NP_005736). Recommended for use at 1-3µg/ml. IHC: Paraffin embedded Human Kidney a
Formulation	0.5 mg/ml in Tris saline, 0.02% sodium azide, pH7.3 with 0.5% bovine serum albumin. NA
Isotype	IgG
Storage Instruction	Store at -20°C on receipt and minimise freeze-thaw cycles.

### TARGET INFORMATION

Gene ID	<a href="#">10134</a>
Gene Symbol	<a href="#">BCAP31</a>
UniProt ID	<a href="#">BAP31_HUMAN</a>
Immunogen Region	C-Term
Immunogen Sequence	QAAVDGPMDKKEE
Specificity	This antibody is expected to recognise isoform a (NP_001132929.1) and isoform b (NP_005736.3; NP_001132913.1).

### ADDITIONAL INFORMATION

Note STRICTLY FOR FURTHER SCIENTIFIC RESEARCH USE ONLY (RUO). MUST NOT TO BE USED IN DIAGNOSTIC OR THERAPEUTIC APPLICATIONS.



STJ70154 (0.1 µg/ml) staining of Human Breast lysate (35 µg protein in RIPA buffer). Primary incubation was 1 hour. Detected by chemiluminescence.