

Anti-RP11/PRPF31 antibody (C-Term) (STJ70139)

GENERAL INFORMATION

Product Type	Primary antibodies
Applications	Pep-ELISA/WB
Host / Source	Goat
Reactivity	Human/Dog

PRODUCT PROPERTIES

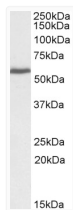
Clonality	Polyclonal
Concentration	0.5 mg/mL
Conjugation	Unconjugated
Purification	Purified from goat serum by ammonium sulphate precipitation followed by antigen affinity chromatography using the immunizing peptide.
Dilution Range	Peptide ELISA: antibody detection limit dilution 1:16000. WB: Approx 60kDa band observed in lysates of cell line A431 (calculated MW of 55.4kDa according to NP_056444.3. Recommended concentration: 0.3-1.0µg/ml.
Formulation	0.5 mg/ml in Tris saline, 0.02% sodium azide, pH7.3 with 0.5% bovine serum albumin. NA
Isotype	IgG
Storage Instruction	Store at -20°C on receipt and minimise freeze-thaw cycles.

TARGET INFORMATION

Gene ID	26121
Gene Symbol	PRPF31
UniProt ID	PRP31_HUMAN
Immunogen Region	C-Term
Immunogen Sequence	LKVKGEKSGLMST

ADDITIONAL INFORMATION

Note STRICTLY FOR FURTHER SCIENTIFIC RESEARCH USE ONLY (RUO). MUST NOT TO BE USED IN DIAGNOSTIC OR THERAPEUTIC APPLICATIONS.



STJ70139 (0.3µg/ml) staining of cell line A431 lysate (35µg protein in RIPA buffer). Primary incubation was 1 hour. Detected by chemiluminescence.