

## Anti-Spinesin/TMPRSS5 antibody (C-Term) (STJ70132)

### GENERAL INFORMATION

Product Type	Primary antibodies
Applications	Pep-ELISA/WB/IHC
Host / Source	Goat
Reactivity	Human/Dog

### PRODUCT PROPERTIES

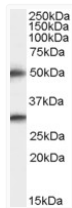
Clonality	Polyclonal
Concentration	0.5 mg/mL
Conjugation	Unconjugated
Purification	Purified from goat serum by ammonium sulphate precipitation followed by antigen affinity chromatography using the immunizing peptide.
Dilution Range	Peptide ELISA: antibody detection limit dilution 1:32000. WB: Experiments gave bands at approx 50kDa and 29kDa in Human Brain (Cerebral Cortex). These bands correspond to earlier findings in literature with different antibodies (Yamaguchi et al,
Formulation	0.5 mg/ml in Tris saline, 0.02% sodium azide, pH7.3 with 0.5% bovine serum albumin. NA
Isotype	IgG
Storage Instruction	Store at -20°C on receipt and minimise freeze-thaw cycles.

### TARGET INFORMATION

Gene ID	<a href="#">80975</a>
Gene Symbol	<a href="#">TMPRSS5</a>
UniProt ID	<a href="#">TMP5_HUMAN</a>
Immunogen Region	C-Term
Immunogen Sequence	LDWIHDTAQDSL

### ADDITIONAL INFORMATION

Note STRICTLY FOR FURTHER SCIENTIFIC RESEARCH USE ONLY (RUO). MUST NOT TO BE USED IN DIAGNOSTIC OR THERAPEUTIC APPLICATIONS.



STJ70132 staining (0.5 µg/ml) of Human Brain (Cerebral Cortex) lysate (RIPA buffer, 35 µg total protein per lane). Primary incubated for 1 hour. Detected by chemiluminescence.