

Anti-DUSP8/HVH5 antibody (N-Term) (STJ70123)

GENERAL INFORMATION

Product Type	Primary antibodies
Applications	Pep-ELISA/WB
Host / Source	Goat
Reactivity	Human/Mouse/Rat/Cow

PRODUCT PROPERTIES

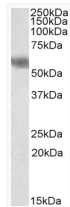
Clonality	Polyclonal
Concentration	0.5 mg/mL
Conjugation	Unconjugated
Purification	Purified from goat serum by ammonium sulphate precipitation followed by antigen affinity chromatography using the immunizing peptide.
Dilution Range	Peptide ELISA: antibody detection limit dilution 1:4000. WB: Approx 55-58kDa band observed in Human (Cerebellum) , Mouse and Rat Brain lysates (calculated MW of 65.8kDa according to Human NP_004411.2, 68.8kDa according to Mouse NP_032774.1 and 66
Formulation	0.5 mg/ml in Tris saline, 0.02% sodium azide, pH7.3 with 0.5% bovine serum albumin. NA
Isotype	IgG
Storage Instruction	Store at -20°C on receipt and minimise freeze-thaw cycles.

TARGET INFORMATION

Gene ID	1850
Gene Symbol	DUSP8
UniProt ID	DUS8_HUMAN
Immunogen Region	N-Term
Immunogen Sequence	AGDRLPRKVMDAK
Specificity	This antibody is also expected to recognise the hypothetical human protein similar to dual specificity phosphatase 8 (XM_114902) , which is virtually identical.

ADDITIONAL INFORMATION

Note STRICTLY FOR FURTHER SCIENTIFIC RESEARCH USE ONLY (RUO). MUST NOT TO BE USED IN DIAGNOSTIC OR THERAPEUTIC APPLICATIONS.



STJ70123 (2µg/ml) staining of Human Cerebellum (A) , Mouse (B) , and Rat (C) Brain lysate (35µg protein in RIPA buffer). Primary incubation was 1 hour. Detected by chemiluminescence.