

## Anti-TBL1X/TBL1XR1 antibody (C-Term) (STJ70119)

### GENERAL INFORMATION

Product Type	Primary antibodies
Applications	Pep-ELISA/IHC
Host / Source	Goat
Reactivity	Human/Mouse/Rat/Dog/Cow

### PRODUCT PROPERTIES

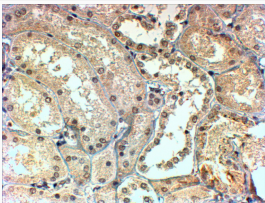
Clonality	Polyclonal
Concentration	0.5 mg/mL
Conjugation	Unconjugated
Purification	Purified from goat serum by ammonium sulphate precipitation followed by antigen affinity chromatography using the immunizing peptide.
Dilution Range	Peptide ELISA: antibody detection limit dilution 1:4000. IHC: In paraffin embedded Human Kidney shows preferential nuclear staining in the DCT. Recommended concentration, 4-6µg/ml.
Formulation	0.5 mg/ml in Tris saline, 0.02% sodium azide, pH7.3 with 0.5% bovine serum albumin. NA
Isotype	IgG
Storage Instruction	Store at -20°C on receipt and minimise freeze-thaw cycles.

### TARGET INFORMATION

Gene ID	<a href="#">6907</a>
Gene Symbol	<a href="#">TBL1X</a>
UniProt ID	<a href="#">TBL1X_HUMAN</a>
Immunogen Region	C-Term
Immunogen Sequence	SASDGSVCVLDLRK
Specificity	This antibody is also expected to recognise the human protein TBLR1 (NP_078941), which is very similar. Variants (NP_005638.1; NP_001132938.1) encode isoform a (TBL1X) and variants (NP_001132939.1; NP_001132940.1) encode isoform b (TBLX1).

### ADDITIONAL INFORMATION

Note STRICTLY FOR FURTHER SCIENTIFIC RESEARCH USE ONLY (RUO). MUST NOT TO BE USED IN DIAGNOSTIC OR THERAPEUTIC APPLICATIONS.



STJ70119 (4µg/ml) staining of paraffin embedded Human Kidney. Steamed antigen retrieval with Tris/EDTA buffer pH 9, HRP-staining.