

## Anti-ELMO3 antibody (C-Term) (STJ70111)

### GENERAL INFORMATION

Product Type	Primary antibodies
Applications	Pep-ELISA/WB/IHC
Host / Source	Goat
Reactivity	Human

### PRODUCT PROPERTIES

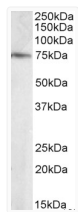
Clonality	Polyclonal
Concentration	0.5 mg/mL
Conjugation	Unconjugated
Purification	Purified from goat serum by ammonium sulphate precipitation followed by antigen affinity chromatography using the immunizing peptide.
Dilution Range	Peptide ELISA: antibody detection limit dilution 1:16000. WB: Approx 75kDa band observed in Human Brain (Hippocampus) lysates (calculated MW of 70.0kDa according to NP_078988.2). Recommended concentration: 0.1-0.3µg/ml. IHC: In paraffin embe
Formulation	0.5 mg/ml in Tris saline, 0.02% sodium azide, pH7.3 with 0.5% bovine serum albumin. NA
Isotype	IgG
Storage Instruction	Store at -20°C on receipt and minimise freeze-thaw cycles.

### TARGET INFORMATION

Gene ID	<a href="#">79767</a>
Gene Symbol	<a href="#">ELMO3</a>
UniProt ID	<a href="#">ELMO3_HUMAN</a>
Immunogen Region	C-Term
Immunogen Sequence	TNFNFCYDCSIAEP

### ADDITIONAL INFORMATION

Note STRICTLY FOR FURTHER SCIENTIFIC RESEARCH USE ONLY (RUO). MUST NOT TO BE USED IN DIAGNOSTIC OR THERAPEUTIC APPLICATIONS.



STJ70111 staining (0.1 µg/ml) of Human Brain (Hippocampus) lysate (RIPA buffer, 35 µg total protein per lane). Primary incubated for 1 hour. Detected by chemiluminescence.