

## Anti-FOXP3/SCURFIN antibody (C-Term) (STJ70110)

### GENERAL INFORMATION

Product Type	Primary antibodies
Applications	Pep-ELISA/WB/IF/FC/ICC/IHC
Host / Source	Goat
Reactivity	Human

### PRODUCT PROPERTIES

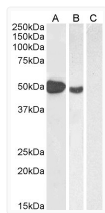
Clonality	Polyclonal
Concentration	0.5 mg/mL
Conjugation	Unconjugated
Purification	Purified from goat serum by ammonium sulphate precipitation followed by antigen affinity chromatography using the immunizing peptide.
Dilution Range	Peptide ELISA: antibody detection limit dilution 1:8000. WB: Approx 48-50kDa band observed in Human Muscle lysates and in lysates of cell line MOLT4 (calculated MW of 47.2kDa according to NP_054728.2). Recommended concentration: 1-3µg/ml. Primary
Formulation	0.5 mg/ml in Tris saline, 0.02% sodium azide, pH7.3 with 0.5% bovine serum albumin. NA
Isotype	IgG
Storage Instruction	Store at -20°C on receipt and minimise freeze-thaw cycles.

### TARGET INFORMATION

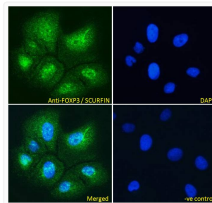
Gene ID	<a href="#">50943</a>
Gene Symbol	<a href="#">FOXP3</a>
UniProt ID	<a href="#">FOXP3_HUMAN</a>
Immunogen Region	C-Term
Immunogen Sequence	SQRPSRCSNPTGPP
Specificity	This antibody is expected to recognize both reported isoforms (NP_054728.2 and NP_001107849.1)

### ADDITIONAL INFORMATION

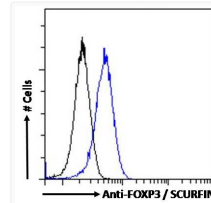
Note STRICTLY FOR FURTHER SCIENTIFIC RESEARCH USE ONLY (RUO). MUST NOT TO BE USED IN DIAGNOSTIC OR THERAPEUTIC APPLICATIONS.



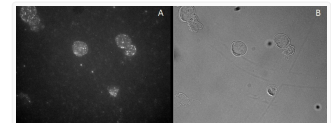
STJ70110 (1µg/ml) staining of Human Muscle (A), (2µg/ml) MOLT4 (B) and (1µg/ml) negative control Pancreas (C) lysate (35µg protein in RIPA buffer). Detected by chemiluminescence.



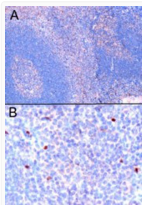
STJ70110 Immunofluorescence analysis of paraformaldehyde fixed U2OS cells, permeabilized with 0.15% Triton. Primary incubation 1hr (10ug/ml) followed by Alexa Fluor 488 secondary antibody (4ug/ml), showing strong localization to nucleoplasm. The nuclear stain is DAPI (blue). Negative control: Unimmunized goat IgG (10ug/ml) followed by Alexa Fluor 488 secondary antibody (4ug/ml).



STJ70110 Flow cytometric analysis of paraformaldehyde fixed Jurkat cells (blue line), permeabilized with 0.5% Triton. Primary incubation 1hr (10ug/ml) followed by Alexa Fluor 488 secondary antibody (4ug/ml). IgG control: Unimmunized goat IgG (10ug/ml) followed by Alexa Fluor 488 secondary antibody.



STJ70110 staining of CD25-sorted (Treg) Human blood cells gathered by cytopsin and detected by FITC (A) and in phase contrast (B).



STJ70110 (1µg/ml) staining of paraffin embedded Human Tonsil. Microwaved antigen retrieval with Tris/EDTA buffer pH9, HRP-staining. A) Nuclear staining of scattered cells in the interfollicular area. B) High magnification of positive cells. This data is from a previous batch, not on sale.