

## Anti-LASP1 antibody (N-Term) (STJ70092)

### GENERAL INFORMATION

Product Type	Primary antibodies
Applications	Pep-ELISA/WB
Host / Source	Goat
Reactivity	Human/Mouse/Rat/Dog/Pig

### PRODUCT PROPERTIES

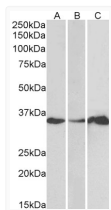
Clonality	Polyclonal
Concentration	0.5 mg/mL
Conjugation	Unconjugated
Purification	Purified from goat serum by ammonium sulphate precipitation followed by antigen affinity chromatography using the immunizing peptide.
Dilution Range	Peptide ELISA: antibody detection limit dilution 1:128000. WB: Approx 35kDa band observed in Human Brain (Cerebellum) and Human Colon, Duodenum, Liver and Pancreas lysates (calculated MW of 29.7kDa according to NP_006139.1). Recommended concentra
Formulation	0.5 mg/ml in Tris saline, 0.02% sodium azide, pH7.3 with 0.5% bovine serum albumin. NA
Isotype	IgG
Storage Instruction	Store at -20°C on receipt and minimise freeze-thaw cycles.

### TARGET INFORMATION

Gene ID	<a href="#">3927</a>
Gene Symbol	<a href="#">LASP1</a>
UniProt ID	<a href="#">LASP1_HUMAN</a>
Immunogen Region	N-Term
Immunogen Sequence	NPNCARCGKIVYP

### ADDITIONAL INFORMATION

Note STRICTLY FOR FURTHER SCIENTIFIC RESEARCH USE ONLY (RUO). MUST NOT TO BE USED IN DIAGNOSTIC OR THERAPEUTIC APPLICATIONS.



STJ70092 (1µg/ml) staining of Human Cerebellum (A), Colon (B) and Duodenum (C) lysate (35µg protein in RIPA buffer). Primary incubation was 1 hour. Detected by chemiluminescence