

Anti-ATF4 antibody (C-Term) (STJ70090)

GENERAL INFORMATION

Product Type	Primary antibodies
Applications	Pep-ELISA/WB
Host / Source	Goat
Reactivity	Human/Mouse/Rat/Pig

PRODUCT PROPERTIES

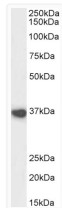
Clonality	Polyclonal
Concentration	0.5 mg/mL
Conjugation	Unconjugated
Purification	Purified from goat serum by ammonium sulphate precipitation followed by antigen affinity chromatography using the immunizing peptide.
Dilution Range	Peptide ELISA: antibody detection limit dilution 1:128000. WB: Approx 35-37kDa band observed in Mouse Heart lysates (calculated MW of 38.3kDa according to Mouse NP_001274109.1; NP_033846.2). Recommended concentration: 0.3-1µg/ml. Primary incubati
Formulation	0.5 mg/ml in Tris saline, 0.02% sodium azide, pH7.3 with 0.5% bovine serum albumin. NA
Isotype	IgG
Storage Instruction	Store at -20°C on receipt and minimise freeze-thaw cycles.

TARGET INFORMATION

Gene ID	468
Gene Symbol	ATF4
UniProt ID	ATF4_HUMAN
Immunogen Region	C-Term
Immunogen Sequence	EEVRKARGKRV
Specificity	This antibody is expected to recognize both reported isoforms (NP_001666.2; NP_877962.1).

ADDITIONAL INFORMATION

Note STRICTLY FOR FURTHER SCIENTIFIC RESEARCH USE ONLY (RUO). MUST NOT TO BE USED IN DIAGNOSTIC OR THERAPEUTIC APPLICATIONS.



STJ70090 (1µg/ml) staining of Mouse Heart lysate (35µg protein in RIPA buffer). Detected by chemiluminescence.