

## Anti-BPOZ/ABTB1 antibody (C-Term) (STJ70071)

### GENERAL INFORMATION

Product Type	Primary antibodies
Applications	Pep-ELISA/WB/IHC
Host / Source	Goat
Reactivity	Human/Mouse/Rat/Dog

### PRODUCT PROPERTIES

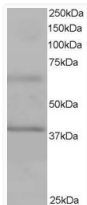
Clonality	Polyclonal
Concentration	0.5 mg/mL
Conjugation	Unconjugated
Purification	Purified from goat serum by ammonium sulphate precipitation followed by antigen affinity chromatography using the immunizing peptide.
Dilution Range	Peptide ELISA: antibody detection limit dilution 1:32000. WB: Approx 38kDa band observed in Human Heart lysates, and approx. 50kDa in preliminary testing of MCF7 cell lysate (calculated MW of 37.6kDa according to NP_115937.1 and 54kDa according to t
Formulation	0.5 mg/ml in Tris saline, 0.02% sodium azide, pH7.3 with 0.5% bovine serum albumin. NA
Isotype	IgG
Storage Instruction	Store at -20°C on receipt and minimise freeze-thaw cycles.

### TARGET INFORMATION

Gene ID	<a href="#">80325</a>
Gene Symbol	<a href="#">ABTB1</a>
UniProt ID	<a href="#">ABTB1_HUMAN</a>
Immunogen Region	C-Term
Immunogen Sequence	RALEDLLVSIGLDC
Specificity	This antibody is expected to recognise all reported isoforms (NP_115937.1; NP_742024.1; NP_742025.1).

### ADDITIONAL INFORMATION

Note STRICTLY FOR FURTHER SCIENTIFIC RESEARCH USE ONLY (RUO). MUST NOT TO BE USED IN DIAGNOSTIC OR THERAPEUTIC APPLICATIONS.



STJ70071 staining (1 µg/ml) of Human Heart lysate (RIPA buffer, 35 µg total protein per lane). Detected by chemiluminescence.