

Anti-DUSP1 antibody (C-Term) (STJ70069)

GENERAL INFORMATION

Product Type	Primary antibodies
Applications	Pep-ELISA/WB/IHC
Host / Source	Goat
Reactivity	Human/Dog/Cow/Mouse/Rat

PRODUCT PROPERTIES

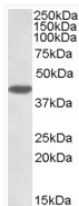
Clonality	Polyclonal
Concentration	0.5 mg/mL
Conjugation	Unconjugated
Purification	Purified from goat serum by ammonium sulphate precipitation followed by antigen affinity chromatography using the immunizing peptide.
Dilution Range	Peptide ELISA: antibody detection limit dilution 1:64000. WB: Approx 40kDa band observed in lysates of HeLa (calculated MW of 39.3kDa according to NP_004408.1). Recommended concentration: 1-3µg/ml. Primary incubation was 1 hour. Preliminary testi
Formulation	0.5 mg/ml in Tris saline, 0.02% sodium azide, pH7.3 with 0.5% bovine serum albumin. NA
Isotype	IgG
Storage Instruction	Store at -20°C on receipt and minimise freeze-thaw cycles.

TARGET INFORMATION

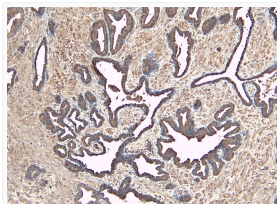
Gene ID	1843
Gene Symbol	DUSP1
UniProt ID	DUS1_HUMAN
Immunogen Region	C-Term
Immunogen Sequence	SYLQSPITTPSC

ADDITIONAL INFORMATION

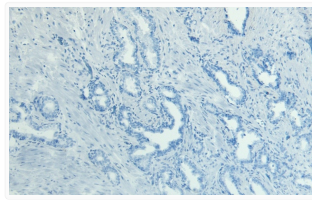
Note STRICTLY FOR FURTHER SCIENTIFIC RESEARCH USE ONLY (RUO). MUST NOT TO BE USED IN DIAGNOSTIC OR THERAPEUTIC APPLICATIONS.



STJ70069 (1µg/ml) staining of HeLa lysate (35µg protein in RIPA buffer). Detected by chemiluminescence.



STJ70069 (8µg/ml) staining of paraffin embedded Human Prostate. Heat induced antigen retrieval with citrate buffer pH 6, HRP-staining.



STJ70069 Negative Control showing staining of paraffin embedded Human Prostate, with no primary antibody.