

Anti-MTM1 antibody (C-Term) (STJ70068)

GENERAL INFORMATION

Product Type	Primary antibodies
Applications	Pep-ELISA/WB/IHC
Host / Source	Goat
Reactivity	Human/Mouse/Dog/Cow

PRODUCT PROPERTIES

Clonality	Polyclonal
Concentration	0.5 mg/mL
Conjugation	Unconjugated
Purification	Purified from goat serum by ammonium sulphate precipitation followed by antigen affinity chromatography using the immunizing peptide.
Dilution Range	Peptide ELISA: antibody detection limit dilution 1:16000. WB: Approx 70kDa band observed in lysates of Human and Mouse Skeletal Muscle and of cell line HepG2 (calculated MW of 69.9kDa according to NP_000243.1 and 69.6kDa according to Mouse NP_0011)
Formulation	0.5 mg/ml in Tris saline, 0.02% sodium azide, pH7.3 with 0.5% bovine serum albumin. NA
Isotype	IgG
Storage Instruction	Store at -20°C on receipt and minimise freeze-thaw cycles.

TARGET INFORMATION

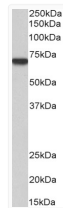
Gene ID	4534
Gene Symbol	MTM1
UniProt ID	MTM1_HUMAN
Immunogen Region	C-Term
Immunogen Sequence	SSPSQMMPHVQTHF

ADDITIONAL INFORMATION

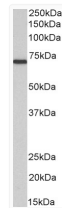
Note STRICTLY FOR FURTHER SCIENTIFIC RESEARCH USE ONLY (RUO). MUST NOT TO BE USED IN DIAGNOSTIC OR THERAPEUTIC APPLICATIONS.



STJ70068 (1µg/ml) staining of Human Skeletal Muscle lysate (35µg protein in RIPA buffer). Detected by chemiluminescence.



STJ70068 (1µg/ml) staining of HepG2 cell lysate (35µg protein in RIPA buffer). Detected by chemiluminescence.



STJ70068 (1µg/ml) staining of Mouse Skeletal Muscle lysate (35µg protein in RIPA buffer). Detected by chemiluminescence.