

Anti-CD20/MS4A1 antibody (C-Term) (STJ70052)

GENERAL INFORMATION

Product Type	Primary antibodies
Applications	Pep-ELISA/WB/IHC
Host / Source	Goat
Reactivity	Human

PRODUCT PROPERTIES

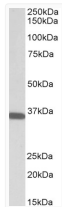
Clonality	Polyclonal
Concentration	0.5 mg/mL
Conjugation	Unconjugated
Purification	Purified from goat serum by ammonium sulphate precipitation followed by antigen affinity chromatography using the immunizing peptide.
Dilution Range	Peptide ELISA: antibody detection limit dilution 1:4000. WB: Approx 35kDa band observed in Human Lymph lysates (calculated MW of 33.1kDa according to NP_068769.2). Recommended concentration: 0.003-0.01µg/ml. Primary incubation was 1 hour. IHC
Formulation	0.5 mg/ml in Tris saline, 0.02% sodium azide, pH7.3 with 0.5% bovine serum albumin. NA
Isotype	IgG
Storage Instruction	Store at -20°C on receipt and minimise freeze-thaw cycles.

TARGET INFORMATION

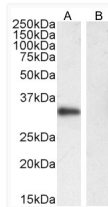
Gene ID	931
Gene Symbol	MS4A1
UniProt ID	CD20_HUMAN
Immunogen Region	C-Term
Immunogen Sequence	CQDQESSPIENDSSP
Specificity	Please note that both reported variants (NP_068769.2 and NP_690605.1) encode the same protein.

ADDITIONAL INFORMATION

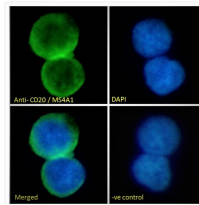
Note STRICTLY FOR FURTHER SCIENTIFIC RESEARCH USE ONLY (RUO). MUST NOT TO BE USED IN DIAGNOSTIC OR THERAPEUTIC APPLICATIONS.



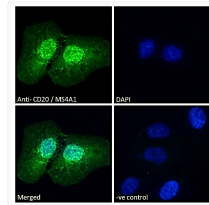
STJ70052 (0.05µg/ml) staining of Human Lymph Node lysate (35µg protein in RIPA buffer). Detected by chemiluminescence.



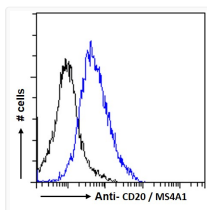
STJ70052 (0.01µg/ml) staining of Daudi (A) and negative control HepG2 (B) cell lysate (35µg protein in RIPA buffer). Detected by chemiluminescence.



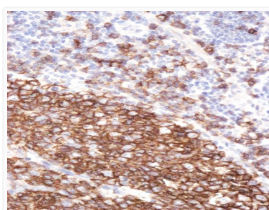
STJ70052 Immunofluorescence analysis of paraformaldehyde fixed Jurkat cells, immobilized on Shi-fix™ coverslip. Primary incubation 1hr (10ug/ml) followed by Alexa Fluor 488 secondary antibody (2ug/ml), showing membrane staining. The nuclear stain is DAPI (blue). Negative control: Unimmunized goat IgG (10ug/ml) followed by Alexa Fluor 488 secondary antibody (2ug/ml).



STJ70052 Immunofluorescence analysis of paraformaldehyde fixed U2OS cells, permeabilized with 0.15% Triton. Primary incubation 1hr (10ug/ml) followed by Alexa Fluor 488 secondary antibody (2ug/ml), showing nuclear and cytoplasmic staining. The nuclear stain is DAPI (blue). Negative control: Unimmunized goat IgG (10ug/ml) followed by Alexa Fluor 488 secondary antibody (2ug/ml).



STJ70052 Flow cytometric analysis of paraformaldehyde fixed Daudi cells (blue line), permeabilized with 0.5% Triton. Primary incubation 1hr (10ug/ml) followed by Alexa Fluor 488 secondary antibody (1ug/ml). IgG control: Unimmunized goat IgG (10ug/ml) followed by Alexa Fluor 488 secondary antibody.



STJ70052 (2µg/ml) staining of paraffin embedded Human Tonsil. Steamed antigen retrieval with citrate buffer pH 6, HRP-staining. This data is from a previous batch, not on sale.