

Anti-ORC3L antibody (C-Term) (STJ70029)

GENERAL INFORMATION

Product Type	Primary antibodies
Applications	Pep-ELISA/WB/IHC
Host / Source	Goat
Reactivity	Human/Mouse/Rat/Dog/Cow

PRODUCT PROPERTIES

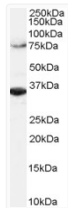
Clonality	Polyclonal
Concentration	0.5 mg/mL
Conjugation	Unconjugated
Purification	Purified from goat serum by ammonium sulphate precipitation followed by antigen affinity chromatography using the immunizing peptide.
Dilution Range	Peptide ELISA: antibody detection limit dilution 1:32000. WB: Approx 75kDa band observed in lysates of cell lines HepG2 and HeLa (calculated MW of 82.3kDa according to NP_862820.1 and NP_036513.2). Recommended concentration: 1-3µg/ml. An additional
Formulation	0.5 mg/ml in Tris saline, 0.02% sodium azide, pH7.3 with 0.5% bovine serum albumin. NA
Isotype	IgG
Storage Instruction	Store at -20°C on receipt and minimise freeze-thaw cycles.

TARGET INFORMATION

Gene ID	23595
Gene Symbol	ORC3
UniProt ID	ORC3_HUMAN
Immunogen Region	C-Term
Immunogen Sequence	QKTDHVARLTWGGC
Specificity	This antibody is expected to recognize reported isoforms NP_862820.1, NP_036513.2 and NP_001184188.1.

ADDITIONAL INFORMATION

Note STRICTLY FOR FURTHER SCIENTIFIC RESEARCH USE ONLY (RUO). MUST NOT TO BE USED IN DIAGNOSTIC OR THERAPEUTIC APPLICATIONS.



STJ70029 (2µg/ml) staining of HeLa lysate (RIPA buffer, 1. 4E5 cells per lane). Detected by chemiluminescence.