

Anti-ALDH1A1 antibody (C-Term) (STJ70020)

GENERAL INFORMATION

Product Type	Primary antibodies
Applications	Pep-ELISA/WB/IF
Host / Source	Goat
Reactivity	Human/Mouse/Rat

PRODUCT PROPERTIES

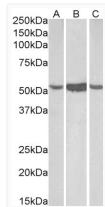
Clonality	Polyclonal
Concentration	0.5 mg/mL
Conjugation	Unconjugated
Purification	Purified from goat serum by ammonium sulphate precipitation followed by antigen affinity chromatography using the immunizing peptide.
Dilution Range	Peptide ELISA: antibody detection limit dilution 1:1000. WB: Approx 55kDa band observed in Human, Mouse and Rat Liver lysates (calculated MW of 54.9kDa according to NP_000680.2). Recommended concentration: 0.1-0.3µg/ml. Primary incubation was 1 h
Formulation	0.5 mg/ml in Tris saline, 0.02% sodium azide, pH7.3 with 0.5% bovine serum albumin. NA
Isotype	IgG
Storage Instruction	Store at -20°C on receipt and minimise freeze-thaw cycles.

TARGET INFORMATION

Gene ID	216
Gene Symbol	ALDH1A1
UniProt ID	AL1A1_HUMAN
Immunogen Region	C-Term
Immunogen Sequence	EVKTVTVKISQKNS
Specificity	This antibody may cross-react with ALDH1A2 (GeneID 8854) with one residue difference from this design and with ALDH2 (GeneID 217) with two residues difference from this design.

ADDITIONAL INFORMATION

Note STRICTLY FOR FURTHER SCIENTIFIC RESEARCH USE ONLY (RUO). MUST NOT TO BE USED IN DIAGNOSTIC OR THERAPEUTIC APPLICATIONS.



STJ70020 (0.1µg/ml) staining of Human (A), Mouse (B) and Rat (C) Liver lysate (35µg protein in RIPA buffer). Detected by chemiluminescence.