

Anti-Phospho-CD244/2B4 antibody (Internal) (STJ70003)

GENERAL INFORMATION

Product Type	Primary antibodies
Applications	Pep-ELISA/IP
Host / Source	Goat
Reactivity	Human

PRODUCT PROPERTIES

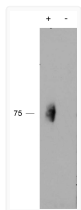
Clonality	Polyclonal
Concentration	0.5 mg/mL
Conjugation	Unconjugated
Purification	Purified from goat serum by ammonium sulphate precipitation followed by antigen affinity chromatography using the immunizing peptide.
Dilution Range	Peptide ELISA: antibody detection limit dilution 1:64000. IP: Approx 75kDa band observed in Human Natural Killer (NK) cell lysates after with immunoprecipitation mouse monoclonal antibody C1.7 coupled to Protein G agarose (calculated MW of 41.1kD)
Formulation	0.5 mg/ml in Tris saline, 0.02% sodium azide, pH7.3 with 0.5% bovine serum albumin. NA
Isotype	IgG
Storage Instruction	Store at -20°C on receipt and minimise freeze-thaw cycles.

TARGET INFORMATION

Gene ID	51744
Gene Symbol	CD244
UniProt ID	CD244_HUMAN
Immunogen Region	Internal
Immunogen Sequence	EFLTIpYEDVKD

ADDITIONAL INFORMATION

Note STRICTLY FOR FURTHER SCIENTIFIC RESEARCH USE ONLY (RUO). MUST NOT TO BE USED IN DIAGNOSTIC OR THERAPEUTIC APPLICATIONS.



STJ70003 (2µg/ml) staining of IP from a lysate of Human Natural Killer cells with (+) or without (-) pervanadate treatment of the cells. Primary incubation was 1 hour. Detected by chemiluminescence. Data kindly provided by Dr Nicholas G Clarkson, Sir William Dunn School of Pathology, Oxford, UK