

## Anti-TM6SF2 antibody (325-375) (STJ503313)

### GENERAL INFORMATION

Product Type	Primary antibodies
Applications	DB/ELISA/IP/WB
Host / Source	Rabbit
Reactivity	Human

### PRODUCT PROPERTIES

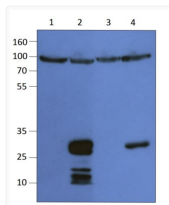
Clonality	Polyclonal
Concentration	0.68-0.70 $\mu\text{g}/\mu\text{l}$
Conjugation	Unconjugated
Purification	Affinity Purified
Dilution Range	WB: 1:250 DB: 1:4, 000 ELISA: 1:4, 000 IP: 1:150
Formulation	Contains Tris, HCl/Glycine buffer pH 7.4-7.8, 30% Glycerol and 0.5% BSA, along with cryo-protective agents, Hepes, and long-term preservatives (0.02% Sodium Azide).
Isotype	IgG
Storage Instruction	Store at -20°C for long term storage. Avoid freeze-thaw cycles.

### TARGET INFORMATION

Gene ID	<a href="#">107770</a>
Gene Symbol	<a href="#">Tm6sf2</a>
UniProt ID	<a href="#">TM6S2_MOUSE</a>
Immunogen Region	325-375

### ADDITIONAL INFORMATION

Note STRICTLY FOR FURTHER SCIENTIFIC RESEARCH USE ONLY (RUO). MUST NOT TO BE USED IN DIAGNOSTIC OR THERAPEUTIC APPLICATIONS.



Western blot with Anti-TM6SF2 Antibody (STJ503312) on 1) Empty vehicle, 2) Recombinant mouse TM6SF2, 3) Empty vehicle, 4) Recombinant human TM6SF2. Antibody at 1:500 dilution in buffer. STJ503312 on lanes 1 & 2. STJ503313 on lanes 2 & 4.