

Anti-TLR10 antibody (380-430) (STJ503273)

GENERAL INFORMATION

Product Type	Primary antibodies
Applications	ELISA/ICC/IF/IHC/IP/WB
Host / Source	Rabbit
Reactivity	Chimpanzee/Human/Monkey/Rat

PRODUCT PROPERTIES

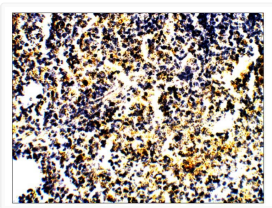
Clonality	Polyclonal
Concentration	0.55-0.67 $\mu\text{g}/\mu\text{l}$
Conjugation	Unconjugated
Purification	Affinity Purified
Dilution Range	WB: 1:500 ELISA: 1:20,000 IP: 1:200 IHC: 1:100 ICC: 1:100 IF: 1:100
Formulation	Contains Tris, HCl/Glycine buffer pH 7.4-7.8, 30% Glycerol and 0.5% BSA, along with cryo-protective agents, Hepes, and long-term preservatives (0.02% Sodium Azide).
Isotype	IgG
Storage Instruction	Store at -20°C for long term storage. Avoid freeze-thaw cycles.

TARGET INFORMATION

Gene ID	81793
Gene Symbol	TLR10
UniProt ID	TLR10_HUMAN
Immunogen Region	380-430

ADDITIONAL INFORMATION

Note STRICTLY FOR FURTHER SCIENTIFIC RESEARCH USE ONLY (RUO). MUST NOT TO BE USED IN DIAGNOSTIC OR THERAPEUTIC APPLICATIONS.



Immunohistochemistry of rat spleen with Anti-TLR10 primary antibody (STJ503273) at 1:100 dilution in Buffer. Section was treated with DAB and Haematoxylin stain. Magnification is at 40X.