

Anti-SRC antibody (400-500) (STJ503201)

GENERAL INFORMATION

Product Type	Primary antibodies
Applications	CM/ELISA/IF/IHC/IP/WB
Host / Source	Rabbit
Reactivity	Human/Mouse/Rat

PRODUCT PROPERTIES

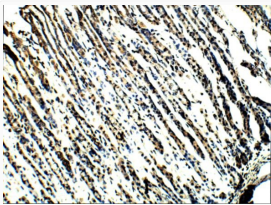
Clonality	Polyclonal
Concentration	0.56-0.60 $\mu\text{g}/\mu\text{l}$
Conjugation	Unconjugated
Purification	Affinity Purified
Dilution Range	WB: 1:500 DB: 1:10, 000 ELISA: 1:10, 000 IP: 1:250 IHC: 1:100 ICC: 1:100 IF: 1:100 CFM: 1:100
Formulation	Contains Tris, HCl/Glycine buffer pH 7.4-7.8, 30% Glycerol and 0.5% BSA, along with cryo-protective agents, HEPES, and long-term preservatives (0.02% Sodium Azide).
Isotype	IgG
Storage Instruction	Store at -20°C for long term storage. Avoid freeze-thaw cycles.

TARGET INFORMATION

Gene ID	6714
Gene Symbol	SRC
UniProt ID	SRC_HUMAN
Immunogen Region	400-500

ADDITIONAL INFORMATION

Note STRICTLY FOR FURTHER SCIENTIFIC RESEARCH USE ONLY (RUO). MUST NOT TO BE USED IN DIAGNOSTIC OR THERAPEUTIC APPLICATIONS.



Immunohistochemistry of rat tissue with Anti-SRC primary antibody (STJ503201) at 1:100 dilution in Buffer. Section was treated with DAB and Haematoxylin stain.