

Anti-SEC24A antibody (810-850) (STJ502894)

GENERAL INFORMATION

Product Type	Primary antibodies
Applications	CM/ELISA/ICC/IHC/IF/IP/WB
Host / Source	Rabbit
Reactivity	Human/Monkey

PRODUCT PROPERTIES

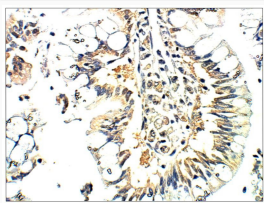
Clonality	Polyclonal
Concentration	0.61-0.64 $\mu\text{g}/\mu\text{l}$
Conjugation	Unconjugated
Purification	Affinity Purified
Dilution Range	WB: 1:500 DB: 1:10, 000 ELISA: 1:10, 000 IP: 1:200 IHC: 1:200 ICC: 1:200 IF: 1:200 CFM: 1:200
Formulation	Contains Tris, HCl/Glycine buffer pH 7.4-7.8, 30% Glycerol and 0.5% BSA, along with cryo-protective agents, Hepes, and long-term preservatives (0.02% Sodium Azide).
Isotype	IgG
Storage Instruction	Store at -20°C for long term storage. Avoid freeze-thaw cycles.

TARGET INFORMATION

Immunogen Region	810-850
------------------	---------

ADDITIONAL INFORMATION

Note STRICTLY FOR FURTHER SCIENTIFIC RESEARCH USE ONLY (RUO). MUST NOT TO BE USED IN DIAGNOSTIC OR THERAPEUTIC APPLICATIONS.



Immunohistochemistry of baboon small intestine with Anti-SEC24A primary antibody (STJ502894) at 1:100 dilution in Buffer. Section was treated with DAB and Haematoxylin stain. Magnification is at 40X.