

## Anti-SEC23A antibody (700-765) (STJ502891)

### GENERAL INFORMATION

Product Type	Primary antibodies
Applications	ELISA/IHC/IP/WB
Host / Source	Rabbit
Reactivity	D.melanogaster/Human/Monkey

### PRODUCT PROPERTIES

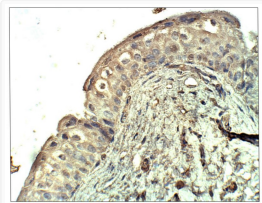
Clonality	Polyclonal
Concentration	0.65 µg/µl
Conjugation	Unconjugated
Purification	Affinity Purified
Dilution Range	WB: 1:500 DB: 1:10, 000 ELISA: 1:10, 000 IP: 1:350 IHC: 1:100
Formulation	Contains Tris, HCl/Glycine buffer pH 7.4-7.8, 30% Glycerol and 0.5% BSA, along with cryo-protective agents, Hepes, and long-term preservatives (0.02% Sodium Azide).
Isotype	IgG
Storage Instruction	Store at -20°C for long term storage. Avoid freeze-thaw cycles.

### TARGET INFORMATION

Gene ID	<a href="#">10484</a>
Gene Symbol	<a href="#">SEC23A</a>
UniProt ID	<a href="#">SC23A_HUMAN</a>
Immunogen Region	700-765
Specificity	This antibody will label both SEC23A and SEC23B in human protein.

### ADDITIONAL INFORMATION

Note STRICTLY FOR FURTHER SCIENTIFIC RESEARCH USE ONLY (RUO). MUST NOT TO BE USED IN DIAGNOSTIC OR THERAPEUTIC APPLICATIONS.



Immunohistochemistry of baboon Bladder with Anti-SEC23A primary antibody (STJ502891) at 1:100 dilution in Buffer. Section was treated with DAB and Haematoxylin stain. Magnification is at 40X.