

Anti-PROM2 antibody (315-338) (STJ502662)

GENERAL INFORMATION

Product Type	Primary antibodies
Applications	ELISA/IHC/IP/WB
Host / Source	Rabbit
Reactivity	Human/Mouse/Rat

PRODUCT PROPERTIES

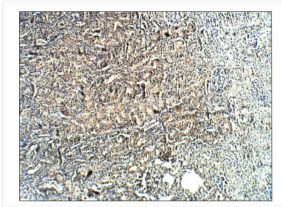
Clonality	Polyclonal
Concentration	0.65 µg/µl
Conjugation	Unconjugated
Purification	Affinity Purified
Dilution Range	WB: 1:500 DB: 1:2, 000 ELISA: 1:2, 000 IP: 1:200 IHC: 1:100 ICC: 1:100 IF: 1:100 CFM: 1:100
Formulation	Contains Tris, HCl/Glycine buffer pH 7.4-7.8, 30% Glycerol and 0.5% BSA, along with cryo-protective agents, Hepes, and long-term preservatives (0.02% Sodium Azide).
Isotype	IgG
Storage Instruction	Store at -20°C for long term storage. Avoid freeze-thaw cycles.

TARGET INFORMATION

Gene ID	150696
Gene Symbol	PROM2
UniProt ID	PROM2_HUMAN
Immunogen Region	315-338

ADDITIONAL INFORMATION

Note STRICTLY FOR FURTHER SCIENTIFIC RESEARCH USE ONLY (RUO). MUST NOT TO BE USED IN DIAGNOSTIC OR THERAPEUTIC APPLICATIONS.



Immunohistochemistry of rat kidney with Anti-PROM2 primary antibody (STJ502662) at 1:100 dilution in buffer. Section was treated with DAB and Haematoxylin stain. Magnification is at 10X.