

## Anti-Phospho-PDE7A antibody (STJ502624)

### GENERAL INFORMATION

Product Type	Primary antibodies
Applications	ELISA/IP/WB
Host / Source	Rabbit
Reactivity	Human/Mouse/Rat

### PRODUCT PROPERTIES

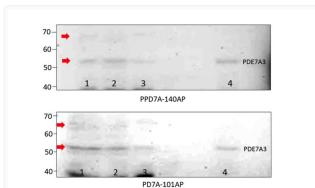
Clonality	Polyclonal
Concentration	0.50-0.75 $\mu\text{g}/\mu\text{l}$
Conjugation	Unconjugated
Purification	Affinity Purified
Dilution Range	WB: 1:500 ELISA: 1:10, 000 IP: 1:250
Formulation	Contains Tris, HCl/Glycine buffer pH 7.4-7.8, 30% Glycerol and 0.5% BSA, along with cryo-protective agents, Hepes, and long-term preservatives (0.02% Sodium Azide).
Isotype	IgG
Storage Instruction	Store at -20°C for long term storage. Avoid freeze-thaw cycles.

### TARGET INFORMATION

Gene ID	<a href="#">18583</a>
Gene Symbol	<a href="#">Pde7a</a>
UniProt ID	<a href="#">PDE7A_MOUSE</a>
Specificity	This antibody is specific for PDE7A variants and will not cross-react with PDE7B or other PDE family members.

### ADDITIONAL INFORMATION

Note STRICTLY FOR FURTHER SCIENTIFIC RESEARCH USE ONLY (RUO). MUST NOT TO BE USED IN DIAGNOSTIC OR THERAPEUTIC APPLICATIONS.



Western blot with Anti-Phospho-PDE7A Antibody (STJ502624) on 1) SKNMBE cells, 2) MCF7 cells, 3) Hu cells and 4) Rat testis. Top - using STJ502624. Bottom - Phospho antibody, STJ502365.