

Anti-Phospho-PDE4D PKA site-S190 antibody (50-100) (STJ502613)

GENERAL INFORMATION

Product Type	Primary antibodies
Applications	ELISA/IHC-P/IP/WB
Host / Source	Rabbit
Reactivity	Human/Mouse/Rat

PRODUCT PROPERTIES

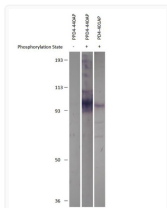
Clonality	Polyclonal
Concentration	0.57 µg/µl
Conjugation	Unconjugated
Purification	Affinity Purified
Dilution Range	WB: 1:500 DB: 1:10, 000 ELISA: 1:10, 000 IP: 1:150 IHC: 1:50-1:100
Formulation	Contains Tris, HCl/Glycine buffer pH 7.4-7.8, 30% Glycerol and 0.5% BSA, along with cryo-protective agents, Hepes, and long-term preservatives (0.02% Sodium Azide).
Isotype	IgG
Storage Instruction	Store at -20°C for long term storage. Avoid freeze-thaw cycles.

TARGET INFORMATION

Gene ID	5144
Gene Symbol	PDE4D
UniProt ID	PDE4D_HUMAN
Immunogen Region	50-100
Specificity	Detects endogenous levels of PDE4D only when phosphorylated at serine 190.

ADDITIONAL INFORMATION

Note STRICTLY FOR FURTHER SCIENTIFIC RESEARCH USE ONLY (RUO). MUST NOT TO BE USED IN DIAGNOSTIC OR THERAPEUTIC APPLICATIONS.



Western blot with Anti-Phospho-PDE4D PKA site (S190) Antibody (STJ502613) with phosphorylated and non-phosphorylated PDE4D3 protein. PDE43 is phosphorylated by catalytic subunit of PKA.