

Anti-Phospho-KIRREL-p737/738 antibody (STJ502567)

GENERAL INFORMATION

Product Type	Primary antibodies
Applications	CM/ELISA/ICC/IF/IHC/IP/WB
Host / Source	Rabbit
Reactivity	Chicken/Human/Mouse/Rat/Zebra Fish

PRODUCT PROPERTIES

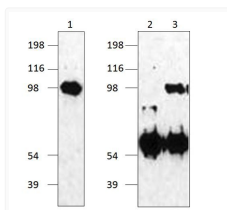
Clonality	Polyclonal
Concentration	0.45-0.65 $\mu\text{g}/\mu\text{l}$
Conjugation	Unconjugated
Purification	Affinity Purified
Dilution Range	WB: 1:250 DB: 1:10, 000 ELISA: 1:10, 000 IP: 1:250 IHC: 1:250 ICC: 1:250 IF: 1:250 CFM: 1:250
Formulation	Contains Tris, HCl/Glycine buffer pH 7.4-7.8, 30% Glycerol and 0.5% BSA, along with cryo-protective agents, Hepes, and long-term preservatives (0.02% Sodium Azide).
Isotype	IgG
Storage Instruction	Store at -20°C for long term storage. Avoid freeze-thaw cycles.

TARGET INFORMATION

Gene ID	170643
Gene Symbol	Kirrel1
UniProt ID	KIRRL1_MOUSE
Specificity	Intracellular domain.

ADDITIONAL INFORMATION

Note STRICTLY FOR FURTHER SCIENTIFIC RESEARCH USE ONLY (RUO). MUST NOT TO BE USED IN DIAGNOSTIC OR THERAPEUTIC APPLICATIONS.



Western blot with Anti-Phospho-KIRREL Antibody (STJ502567) with 1) NEPH1 peptide. Lane 2) STJ502567 with NEPH1 peptide. Lane 3) STJ502567 with PNEPH1 peptide. Antibody at 1:500 dilution in buffer.