

Anti-PDE4D1 antibody (N-Term) (STJ502322)

GENERAL INFORMATION

Product Type	Primary antibodies
Applications	ELISA/IP/WB
Host / Source	Rabbit
Reactivity	Chicken/Mouse/Rat

PRODUCT PROPERTIES

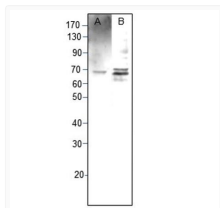
Clonality	Polyclonal
Concentration	0.73 µg/µl
Conjugation	Unconjugated
Purification	Affinity Purified
Dilution Range	WB: 1:500 DB: 1:10, 000 ELISA: 1:10, 000 IP: 1:150
Formulation	Contains Tris, HCl/Glycine buffer pH 7.4-7.8, 30% Glycerol and 0.5% BSA, along with cryo-protective agents, Hepes, and long-term preservatives (0.02% Sodium Azide).
Isotype	IgG
Storage Instruction	Store at -20°C for long term storage. Avoid freeze-thaw cycles.

TARGET INFORMATION

Immunogen Region	N-Term
Specificity	Will not cross react with other PDE4D variants or other PDE family members.

ADDITIONAL INFORMATION

Note STRICTLY FOR FURTHER SCIENTIFIC RESEARCH USE ONLY (RUO). MUST NOT TO BE USED IN DIAGNOSTIC OR THERAPEUTIC APPLICATIONS.



Western blot with Anti-PDE4D1 Antibody (STJ502322) on a) PD4D1 peptide and b) rat kidney at 1:500 dilution in buffer.