

## Anti-PDE3A antibody (STJ502262)

### GENERAL INFORMATION

Product Type	Primary antibodies
Applications	ELISA/FRET/ICC/IF/IHC/IP/WB
Host / Source	Rabbit
Reactivity	Human/Monkey/Mouse/Rat/Xenopus

### PRODUCT PROPERTIES

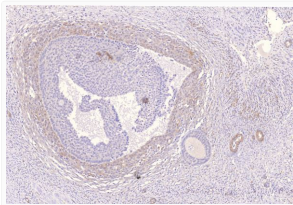
Clonality	Polyclonal
Concentration	0.719 $\mu\text{g}/\mu\text{l}$
Conjugation	Unconjugated
Purification	Affinity Purified
Dilution Range	WB: 1:500 DB: 1:10,000 ELISA: 1:10,000 IP: 1:200 IHC: 1:250 ICC: 1:250 IF: 1:250 CFM: 1:250
Formulation	Contains Tris, HCl/Glycine buffer pH 7.4-7.8, 30% Glycerol and 0.5% BSA, along with cryo-protective agents, HEPES, and long-term preservatives (0.02% Sodium Azide).
Isotype	IgG
Storage Instruction	Store at -20°C for long term storage. Avoid freeze-thaw cycles.

### TARGET INFORMATION

Gene ID	<a href="#">5139</a>
Gene Symbol	<a href="#">PDE3A</a>
UniProt ID	<a href="#">PDE3A_HUMAN</a>

### ADDITIONAL INFORMATION

Note STRICTLY FOR FURTHER SCIENTIFIC RESEARCH USE ONLY (RUO). MUST NOT TO BE USED IN DIAGNOSTIC OR THERAPEUTIC APPLICATIONS.



Immunohistochemistry of human ovarian medulla with Anti-PDE3A primary antibody (STJ502262) at 1:100 dilution in buffer.