

Anti-PDE2A antibody (1-50) (STJ502256)

GENERAL INFORMATION

Product Type	Primary antibodies
Applications	ELISA/IHC/IP/WB
Host / Source	Rabbit
Reactivity	Human/Mouse/Rat

PRODUCT PROPERTIES

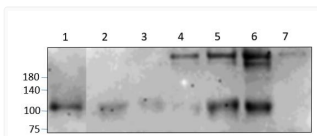
Clonality	Polyclonal
Concentration	0.5 µg/µl
Conjugation	Unconjugated
Purification	Affinity Purified
Dilution Range	WB: 1:500 ELISA: 1:10,000 IP: 1:200 IHC: 1:100
Formulation	Contains Tris, HCl/Glycine buffer pH 7.4-7.8, 30% Glycerol and 0.5% BSA, along with cryo-protective agents, Hepes, and long-term preservatives (0.02% Sodium Azide).
Isotype	IgG
Storage Instruction	Store at -20°C for long term storage. Avoid freeze-thaw cycles.

TARGET INFORMATION

Gene ID	5138
Gene Symbol	PDE2A
UniProt ID	PDE2A_HUMAN
Immunogen Region	1-50
Specificity	This antibody will detect PDE2A3 only.

ADDITIONAL INFORMATION

Note STRICTLY FOR FURTHER SCIENTIFIC RESEARCH USE ONLY (RUO). MUST NOT TO BE USED IN DIAGNOSTIC OR THERAPEUTIC APPLICATIONS.



Western blot with Anti-PDE2A Antibody (STJ502256) on rat 1) Heart, 2) Testis, 3) Ovary, 4) Midbrain, 5) Cerebellum, 6) Spinal cord. Antibody at 1:250 dilution in buffer.