

Anti-PDE11A antibody (100-150) (STJ502208)

GENERAL INFORMATION

Product Type	Primary antibodies
Applications	CM/ELISA/ICC/IF/IHC/IP/WB
Host / Source	Rabbit
Reactivity	Human/Mouse/Rat

PRODUCT PROPERTIES

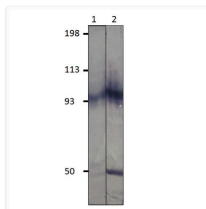
Clonality	Polyclonal
Concentration	0.68 µg/µl
Conjugation	Unconjugated
Purification	Affinity Purified
Dilution Range	WB: 1:500 DB: 1:10, 000 ELISA: 1:10, 000 IP: 1:250 IHC: 1:250 ICC: 1:250 IF: 1:250 CFM: 1:250
Formulation	Contains Tris, HCl/Glycine buffer pH 7.4-7.8, 30% Glycerol and 0.5% BSA, along with cryo-protective agents, Hepes, and long-term preservatives (0.02% Sodium Azide).
Isotype	IgG
Storage Instruction	Store at -20°C for long term storage. Avoid freeze-thaw cycles.

TARGET INFORMATION

Gene ID	50940
Gene Symbol	PDE11A
UniProt ID	PDE11_HUMAN
Immunogen Region	100-150
Specificity	Does not cross-react with any of the members of the PDE family. This antibody is common to all PDE11A variants including PDE11A1-PDE11A4.

ADDITIONAL INFORMATION

Note STRICTLY FOR FURTHER SCIENTIFIC RESEARCH USE ONLY (RUO). MUST NOT TO BE USED IN DIAGNOSTIC OR THERAPEUTIC APPLICATIONS.



Lane 1) Western blot with Anti-PDE11A Antibody (STJ502208) with PD11A peptide. Antibody at 1:250 dilution in buffer.